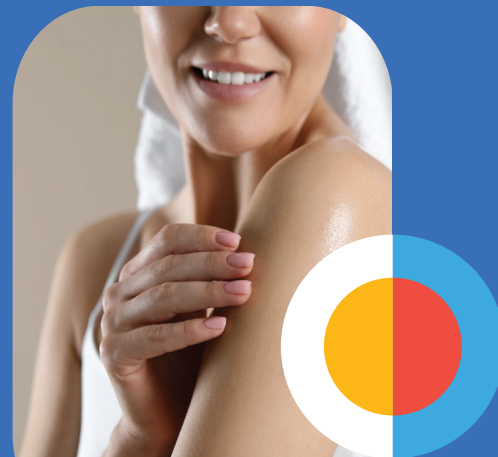


Quench Hydrating Body Milk

#18190-1



Experience the next evolution of body toners with our Body Milky Toner, a skin replenishing treatment designed to hydrate, comfort, and condition—never strip. This silky, milky formula hugs the skin with lasting moisture while delivering a refined, luxurious application experience. At its core is a high performance hydration package featuring GENENCARE™ OSMS MI, providing osmoprotection and oxygenation support for revitalized skin, and ElfaMoist™ AC, a powerhouse humectant with 30 hour moisturization capabilities. Together, they create a hydration reserve that keeps skin supple and resilient throughout the day.

A lightweight yet indulgent emollient phase combines Harmonie™ Soft Fluid, Fancor® Meadowfoam Seed Oil, and Phytosqualan to achieve a velvety glide without heaviness—ideal for all over body application. These emollients are expertly structured with Pemulen™ TR 1, enabling a cold processable, stable emulsion with the perfect viscosity for body care formats. To elevate its sensory, Harmonie™ GB 2301 Blend enhances slip, cushioning, and overall application aesthetics, giving the toner its signature “liquid silk” finish.

The formula is completed with a botanical boost from Actiphyte™ Red Clover Blossom GL—a plant extract historically associated with soothing benefits, improved elasticity, increased hydration, and antioxidant defense. The result is a body toner that not only refreshes, but actively nurtures and fortifies the skin.

INCI	TRADE NAME	FUNCTION	SUPPLIER	%
PHASE A				
Water		Vehicle		76.50
Propanediol	Zemea® propanediol	Humectant	CovationBio, PDO	5.00
Inositol	GENENCARE® OSMS MI	Osmolyte	IFF	2.00
Glycerin	Glycerin 99.7% USP Kosher	Humectant	Essential Ingredients	1.00
Maltodextrin / VP Copolymer	Biostyle™ CGP	Polymer	Nouryon	1.50
Acetamidoethoxyethanol	ElfaMoist™ AC	Humectant	Nouryon	1.00
Glycerin (and) Water (and) Calendula Officinalis Flower Extract	Actiphyte™ Calendula GL	Botanical	Lipotec	1.00
Glycerin (and) Water (and) Trifolium Pratense (Clover) Flower Extract	Actiphyte™ Red Clover Blossom GL	Botanical	Lipotec	1.00

PHASE B

Squalane	Phytosqualan Olive	Emollient	Sophim	2.00
Triolein	AlgaPur™ HSHO Algae Oil	Emollient	Lubrizol	1.50
C9-12 Alkane	Harmonie™ Soft Fluid	Emollient	Momentive	5.00
C9-12 Alkane (and) Dimethiconol	Harmonie™ GB 2301 Gum Blend	Emollient	Momentive	1.25
Acrylates/C10-30 Alkyl Acrylate Crosspolymer	Pemulen™ TR-1	Emulsifier	Lubrizol	0.25

PHASE C

Sorbitan Caprylate (and) Propanediol (and) Benzoic Acid	Nipaguard® SCE	Preservative	Clariant	1.00
Water (and) Sodium Hydroxide	NaOH 25% Solution	pH Adjuster		q.s.

TOTAL

100%



Mixing Instructions

- Add the **Phase A** components to an appropriate vessel, one at a time, mixing thoroughly after each addition.
- Concurrently, in a separate vessel, combine the **Phase B** components, mixing thoroughly. (**Note:** the Pemulen™ TR-1 will not dissolve, it is to be evenly dispersed in the solution.)
- Transfer **B** to **A**, mixing at a high speed, until uniform.
- Add the Nipaguard and mix thoroughly.
- Use the NaOH Solution to adjust the pH to the desired level.

Appearance: Milky, white to off-white cream

pH: 7.06

Viscosity: 2480 (LVT 3 spindle at 30 rpm)