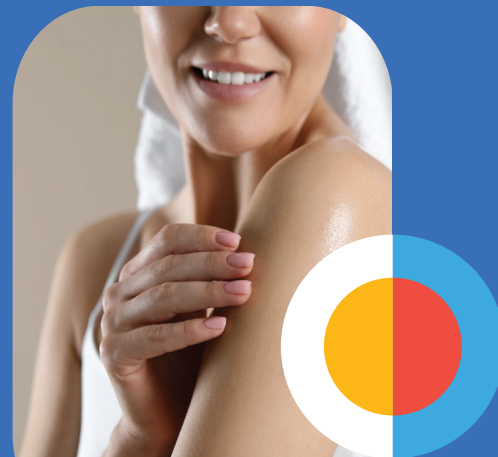


# Moisture Rich In-Shower Body Balm

#13211-2



A sensorially rich, in shower body balm designed to deliver instant moisturization and leave skin smooth, nourished, and day ready. The balm's foundational structure is built around Castorlatum™, a high performing natural petrolatum replacement that delivers occlusive moisturization and slip while maintaining a clean, modern sensory profile.

Structural integrity, cushion, and resilience are enhanced through the inclusion of Harmonie™ Natuvel Gel, which imparts a soft bounce and luxurious payoff, alongside Castorwax™ MP 80, providing high temperature stability and firmness.

A carefully balanced ester system delivers both rich emolliency and rapid absorption. Signature ingredients such as Phytosqualan and Algapur™ HSHO Algae Oil replenish skin lipids and support suppleness, while Harmonie™ Soft Fluid ensures a quick absorbing, dry after feel that prevents heaviness.

Skin barrier performance is elevated with Meadowstolide®, a bioactive ceramide analogue that supports barrier reinforcement and transepidermal water loss (TEWL) reduction, enabling ceramide aligned skin protection and hydration claims.

The balm's subtle pink hue is naturally derived from Actique™ Shikon, which also contributes anti inflammatory and skin soothing benefits, supporting calm, comforted skin. Final sensorial tuning is achieved with Amaze™ Nordic Barley, allowing precise tuning of the rich to dry aesthetic balance for a customized, premium in shower experience. A refined fusion of texture, performance, and ingredient luxury—crafted for skin that looks radiant, feels indulgently smooth, and is cared for beyond the shower.

INCI	TRADE NAME	FUNCTION	SUPPLIER	%
<b>PHASE A (Main)</b>				
<b>Ricinus Communis (Castor) Seed Oil (and) Hydrogenated castor oil</b>	Castorlatum™	Structuring Agent	Aurorium	49.90
<b>Squalane</b>	Phytosqualan Olive	Ester	Sophim	2.00
<b>Triolein</b>	AlgaPur™ HSHO Algae Oil	Ester	Lubrizol	5.00
<b>C9-12 Alkane</b>	Harmonie™ Soft Fluid	Ester	Momentive	10.00
<b>Isostearyl Hydroxystearate</b>	Schercemol™ SHS	Structuring Agent	Lubrizol	3.00
<b>Coco-Caprylate/Caprata (and) Polyglyceryl-2 Isostearate/Dimer Dilinoleate Copolymer (and) Squalane</b>	Harmonie™ NatuVel Gel	Structuring Agent	Momentive	1.00

<b>Hydrogenated Castor Oil</b>	Castorwax™ MP-80	Structuring Agent	Aurorium	2.00
<b>Caprylic/Capric Triglycerides</b>	Caprylic/Capric Triglyceride RSPO	Ester	Essential Elements	10.00
<b>Meadowfoam Estolide</b>	Meadowestolide®	Hydration Active	Elementis	2.00
<b>PHASE B</b>				
<b>Hordeum Vulgare Seed Flour</b>	Amaze™ Nordic Barley	Aesthetic Modifier	Nouryon	1.00
<b>Caprylic/Capric Triglyceride (and) Lithospermum Erythrorhizon Root Extract</b>	Actique™ Shikon	Active and Colorant		0.10
<b>TOTAL</b>				<b>100%</b>



## Mixing Instructions

- Combine all **Phase A** ingredients and heat with mixing to ~80°C until fully combined and uniform. Once uniform remove from heat and continue to mix while cooling.
- When the batch cools to ~60°C add Phase B ingredients one at a time and mix until uniform. Continue to mix while the batch cools until you are ready to fill.

**Appearance:** Light pink anhydrous soft solid

**pH:** n/a

**Viscosity:** > 40,000 cps

